

Step 1: Open LMArena AI (or Google Gemini)

Step 2: Switch to Image Mode.

Step 3: Upload your photo.

Step 4: Enter this prompt:

Cinematic post-apocalyptic portrait of a fierce blonde warrior woman inside a rusty, destroyed car in the desert. She grips the steering wheel with intensity, her skin covered in dirt and dust, tattoos visible on her arms. Long messy platinum blonde hair glowing in the sunlight, piercing blue eyes with dramatic makeup, determined expression. Rusty car interior, broken glass, metal textures, sun-bleached desert wasteland outside, and atmospheric dust in the air. Ultra-realistic, high detail, epic Mad Max aesthetic, gritty cinematic lighting, sharp focus. Shot on Nikon D850 DSLR, 35mm f/1.8 lens, ISO 100, shutter speed 1/500s, aperture f/1.8, natural desert sunlight, shallow depth of field, photorealism, professional color grading, cinematic tone mapping.

Step 5: Upscale with your favorite upscaler and retouch in Photoshop or Lightroom.

(MyFavUpscalers = Magnific & Bloom)



Step 1: Open LMArena AI (or Google Gemini)

Step 2: Switch to Image Mode.

Step 3: Upload your photo.

Step 4: Enter this prompt:

Ultra-realistic close-up portrait of a young woman with long flowing hair, strands softly moving across her face. Natural beauty, delicate lips, expressive eyes, dreamy and intimate atmosphere. Soft window light, shallow depth of field, cinematic tones, bokeh background. Editorial fashion photography style, high-resolution, professional retouching, natural skin texture preserved. Shot on Nikon D850, 85mm f/1.4 lens, aperture f/1.4, ISO 100, shutter speed 1/250s, cinematic portrait lighting, photorealistic detail, subtle film grain for a fine art look.

Step 5: Upscale with your favorite upscaler and retouch in Photoshop or Lightroom.

(MyFavUpscalers = Magnific & Bloom)



Step 1: Open LMArena AI (or Google Gemini)

Step 2: Switch to Image Mode.

Step 3: Upload your photo.

Step 4: Enter this prompt:

Use the Photo as character input and guide. Epic fantasy cinematic portrait of a mysterious woman with long white hair, standing on moss-covered stone stairs in ancient ruins. She wears a flowing golden gown that catches the sunlight, revealing her silhouette as she turns back.

Magical golden light streams through broken arches, illuminating the overgrown temple ruins with ethereal glow. Surroundings full of moss, ivy, ferns and wildflowers, atmosphere enchanted and timeless. Ultra-realistic, highly detailed, cinematic fantasy style, inspired by Lord of the Rings and medieval legends. Shot on Nikon D850, 50mm f/1.4 lens, ISO 100, aperture f/1.4, shutter speed 1/250s. Soft bokeh, golden hour light, photorealism with fine art mood

Step 5: Upscale with your favorite upscaler and retouch in Photoshop or Lightroom.

(MyFavUpscalers = Magnific & Bloom)



Step 1: Open LMArena AI (or Google Gemini)

Step 2: Switch to Image Mode.

Step 3: Upload your photo.

Step 4: Enter this prompt:

Use the input photo as reference, keep the same face, pose, and body characteristics. Transform into an edgy cyberpunk fashion portrait: a muscular androgynous figure posing dramatically against a gritty concrete wall with warning posters in Chinese. Intense expression, body in high tension, one arm raised, dynamic energy. Shiny white platform boots with laces, ripped translucent tights, metallic accessories. Cinematic harsh lighting with golden side light and deep shadows, urban grunge aesthetic. Atmosphere raw, provocative, avant-garde fashion photography, mixing underground fetish style with dystopian cyberpunk vibes. Ultra-realistic detail, professional retouching, high contrast textures, cinematic composition. Shot on Nikon D850, 35mm f/1.4 lens, aperture f/2.0, ISO 200, shutter speed 1/250s, dramatic directional lighting, gritty editorial look

Step 5: Upscale with your favorite upscaler and retouch in Photoshop or Lightroom.
(MyFavUpscalers = Magnific & Bloom)



Step 1: Open LMArena AI (or Google Gemini)

Step 2: Switch to Image Mode.

Step 3: Upload your photo.

Step 4: Enter this prompt:

Use the input photo as reference, keep the same body pose and proportions. Transform into a futuristic cyborg fashion portrait: a muscular androgynous figure pressed dramatically against a metallic wall, body in high tension. The human skin seamlessly merges with biomechanical elements – chrome implants, glowing circuitry under the skin, translucent panels revealing inner mechanics. White platform boots remain but enhanced with cybernetic details, tights appear as futuristic armor mesh with glowing accents and digital patterns. Lighting: cinematic and harsh, with glowing neon highlights (cyan and magenta reflections) across the metallic textures.

Atmosphere: dystopian cyberpunk, underground fashion shoot, raw industrial background with holographic projections. Ultra-realistic detail, polished metallic surfaces, biomechanical anatomy blended with organic flesh, avant-garde fashion look. Shot on Nikon D850, 35mm f/1.8 lens, aperture f/2.0, ISO 200, shutter speed 1/250s, dramatic side lighting with neon accents, hyper-detailed photorealism, cyberpunk editorial style

Step 5: Upscale with your favorite upscaler and retouch in Photoshop or Lightroom.

(MyFavUpscalers = Magnific & Bloom)



Step 1: Open LMArena AI (or Google Gemini) **Step 2:** Switch to Image Mode.

Step 3: Upload your photo. **Step 4:** Enter this prompt:

high-fashion editorial photography, slim young woman in jeans and ribbed bralette, side profile pose, hand in hair, toned body with rib tattoo, dramatic studio lighting, black and white, cinematic shadows, minimalist background, Vogue style, sharp focus, ultra-realistic skin texture, film grain. Shot on Canon EOS R5 with RF 85mm f/1.2L lens, aperture f/1.8, shutter speed 1/160 sec, ISO 100, studio setup with soft box lighting

Step 5: Upscale with your favorite upscaler and retouch in Photoshop or Lightroom.

(MyFavUpscalers = Magnific & Bloom)



MJ: Avant-garde fashion portrait, screaming face fully painted in explosive rainbow colors, neon body paint covering entire skin, hyper-saturated rainbow streaks across forehead, eyes, lips and cheeks, dynamic expression full of raw emotion, mouth open wide in a powerful scream, candy sprinkles and glitter exploding from the skin, shot in intense neon lighting, ultra-dramatic, super dynamic composition, high-fashion editorial look, Vogue magazine cover vibe, hyper realistic detail, cinematic studio lighting, Nikon Z9, 50mm f/1.2, iconic avant-garde runway photography -
-ar 3:4 --raw --sref 1385003511 --profile czz2uvu 59xiqd5 xfudyez rpmcfcb min6aae --oref <https://s.mj.run/SP0y9S0VGfs> --ow 900



MJ: A surreal dark art scene of a mystical forest at twilight, the air heavy with fog and bioluminescent spores glowing faintly in the shadows. In the center stands a ghostly female figure, the model transformed into an ethereal being, her pale painted skin shimmering with ash and muted metallic tones. Her shredded, translucent garment dissolves into organic textures, looking like decayed spider silk and moss, glowing faintly with ember hues. Her wild, chaotic hair rises upward as if caught by unseen currents, merging with branches overhead, strands blending into roots and fibrous vines that weave through the scene. The forest around her is alive and sentient: twisted trees with bark resembling scarred flesh, branches curling like claws, thick roots pushing out of the ground in sculptural arcs. The ground is covered in damp leaves, mushrooms glowing faintly with eerie blue-green light, while ghostly mist winds around her legs. From the undergrowth, vines, and tendrils creep upwards, wrapping around her arms and thighs, beginning to fuse with her body a symbiosis of human and nature. Her fingers, painted black, elongate into root-like extensions, while her veins glow faintly under the skin, echoing the patterns of the climbing plants. The atmosphere is cinematic, painterly, and surreal: shafts of pale moonlight pierce through the fog, illuminating the figure like a forgotten forest deity being reborn. Tiny embers and spores float in the air, caught in a shallow depth of field, creating a dreamlike halo. Her expression is hauntingly serene, lips parted slightly, eyes shadowed but glowing faintly, as if she has accepted becoming one with the forest. The entire composition feels both fragile and terrifying: beauty merging with decay, creation entangled with consumption, the forest reclaiming her as part of its eternal cycle. Camera & Rendering Details (simulated): Hasselblad H6D 100c with 100mm f/2.2 lens ISO 100, aperture f/2.0, shutter speed 1/160 sec cinematic lighting with a single overhead spotlight softened through fog, rim light in cool tones to emphasize organic textures, deep shadows preserved ultra-sharp focus on the model's face and upper body, background dissolving into painterly blur photorealistic with surreal painterly accents, ultra-detailed textures, high contrast with muted gothic color palette: deep moss greens, ashen grays, burnt umbers, glowing cyan highlights Mood: haunting, surreal, award-winning dark art photography the sacred moment where human flesh surrenders to the organic cathedral of the forest, becoming a hybrid of roots, veins, and myth. --ar 3:4 --raw --sref 1385003511 <https://s.mj.run/IGc6rCWGeY4> --profile czz2uvu 59xiqd5 xfudyez rpmcfcb min6aae --oref <https://s.mj.run/Ww2IEnx5gql>



seedream-4-high-res: A hyper-cinematic portrait of a biomechanical female entity, emerging from fractured light beams in a cybernetic environment. Her body is sculpted from organic muscle and metallic implants, every vein replaced by cable structures, the skin a surface of chrome-like textures shimmering under harsh directional light. The background is a cascade of abstract city structures dissolving into motion blur, giving the impression of speed, transition, and digital collapse. Her gaze turns sideways, sharp, and almost defiant, as if scanning data streams beyond the visible spectrum. The scene balances surreal beauty and raw techno-horror, an echo of Giger fused with futuristic sprawl. Shot as if with a Hasselblad H6D-100c, 100mm f/2.2 lens, ISO 100, aperture f/4.0, shutter 1/160 sec, studio strobes with green gel backlight and hard rim lighting to emphasize metallic reflections, rendered in ultra-high resolution. The depth of field is shallow, isolating the Biomech figure against the exploding geometry, while chromatic highlights and lens breathing effects simulate a high-end cinematic Model: https://www.instagram.com/loewemaedchen_mme/
Original Prompt input image: <https://www.deviantart.com/brownzworx/art/Robotika-Queen-56025089>



Variance 2:



Variance 3:



Variance 4:



seedream-4-high-res: A hyper-realistic high-end editorial portrait of a female cyborg in a futuristic cityscape, blending organic beauty with biomechanical detail. Her short black hair frames a flawless human face, softly lit with cinematic highlights, while her body is encased in polished chrome plating, exposed circuits, and intricate wiring that glows with faint neon reflections. Her shoulder and torso reveal mechanical components, hydraulic tubing, and micro-reactors, integrated seamlessly with organic skin. Behind her, shattered glass spreads like spiderwebs, catching the light from neon tubes and creating fractured reflections, while the blurred city lights in the background streak with motion, evoking speed, and dystopian energy. Her expression is calm yet defiant, eyes locked on the viewer with quiet intensity, merging the vulnerability of humanity with the cold precision of machines. The light sculpts every metallic curve and detail: reflections ripple across the chrome surface, while faint hues of cyan, magenta, and amber dance along cables and joints. Dust particles float in the illuminated air, adding atmospheric realism. Camera & Technical Setup (simulated): Hasselblad H6D-100c, 100mm f/2.2 lens, ISO 100, aperture f/4.0, shutter speed 1/200 sec, dual-key lighting with neon tubes on both sides, one cool rim light emphasizing chrome, one warm frontal softbox to preserve skin tones, backlit shards of glass for cinematic flare, shallow depth of field isolating subject with crisp detail while background dissolves into dynamic bokeh and motion blur. Post-production: ultra-high-end editorial retouch, cinematic teal-orange color grading, precise sharpening of metallic microtextures, glow and flare added for dramatic sci-fi atmosphere. The overall aesthetic is a surreal fusion of cyberpunk fashion editorial and cinematic sci-fi concept art, where human fragility and engineered perfection collide in one iconic frame.

Prompt input image: <https://www.fotocommunity.de/photo/zwischen-den-welten-der-brownz-brownzart-reloaded/20446810>



seedream-4-high-res: A high-end editorial style photograph of a female cyborg, captured in cinematic chiaroscuro lighting with a dramatic, fashion-oriented aesthetic. She stands in profile, looking over her shoulder with a defiant yet elegant expression, her short black hair tousled and softly illuminated. Her body is a seamless fusion of flesh and biomechanical detail: translucent skin revealing intricate wiring, polished chrome surfaces, and glowing internal components that fade into blurred abstraction as they dissolve into the background. The mechanical structures embedded into her back and neck connect with visible tubes and cables, sculptural and precise, yet treated with the visual language of haute couture. The background is a desaturated haze, softly lit to create depth, with faint hints of futuristic architecture blurred into painterly motion. The subdued color palette enhances the metallic reflections and organic textures, with subtle teal and bronze accents shimmering across her skin and implants. The image is sharply focused on her face and upper torso, with controlled falloff into artistic blur, giving the impression of movement and transition between human and machine. Camera & Technical Setup (simulated): Hasselblad H6D-100c with 100mm f/2.2 lens, ISO 100, aperture f/4.0, shutter speed 1/200 sec. Lighting: one large octabox key light at 45° with soft feathering, a minimal rim light to outline the mechanical shoulder and cables, and subtle fill to preserve shadow detail without losing contrast. Depth of field is shallow to isolate the subject crisply while background dissolves into cinematic blur. Post-production: high-end editorial retouching, precise color grading with muted tones, polished highlights on metallic details, subtle film grain for a magazine-ready finish. The overall mood: a visionary fusion of fashion photography and cyberpunk art, presenting the cyborg body not as science fiction, but as couture — sleek, elegant, and editorially iconic. Input Model: https://www.instagram.com/jennifer_rbch/



NANO banana Version:



seedream-4-high-res: A hyper-detailed, surreal high-end editorial fashion photograph of a model in profile, emerging in a futuristic haute couture gown sculpted entirely from translucent, crystalline materials resembling molten glass, layered with flowing textures that catch and refract light like frozen water. The garment is embedded with shimmering pearl-like beads and fine metallic threads, giving the illusion of bioluminescent organisms suspended within the fabric. Surrounding her are dozens of delicate, transparent insect-like sculptures, hovering mid-air as if frozen in time, their wings crafted from thin, iridescent glass sheets and tipped with gemstone-like cores that sparkle under controlled lighting. The background is a saturated ultramarine blue gradient, evoking the depth of an endless ocean or the vastness of outer space, adding surreal isolation to the composition. The model's skin is painted in porcelain-white tones with a subtle silver sheen, creating stark contrast to the vibrant environment. Her makeup is avant-garde: metallic pigments accentuate eyelids, cheeks and lips, catching light with holographic shifts. Her dark hair is styled into an intricate sculptural updo, adorned with crystal shards and reflective ornaments, almost merging her with the surrounding crystalline swarm. The atmosphere is cinematic, poised between dream and science fiction: it suggests an alien queen, a deep-sea oracle, or an ethereal AI-goddess. Every fold of the crystalline dress refracts light differently, scattering fragments of rainbow hues across her figure and the hovering insects. Micro-shadows and reflections ripple through the scene, lending a sense of hyper-real immersion. Lighting is executed with precision: a **large soft key light from camera left**, angled slightly above eye level, creates fluid highlights across the crystalline surfaces; a **second hard rim light from behind** sculpts the silhouette and emphasizes the transparency of the wings; additional subtle **fill light with a silver reflector** prevents the shadow side from collapsing into flatness, while keeping depth intact. The background is independently lit with soft gradients, producing the illusion of endless dimensional space. Captured with a **Hasselblad H6D-100c medium format camera, 100mm f/2.2 lens, ISO 100, aperture f/8, shutter speed 1/200s**, tethered shooting for precise color management. Post-production includes high-end frequency separation for skin texture, micro-dodge & burn for sculptural dimension, selective color grading in the cyan and ultramarine ranges, and fine sharpening in **Photoshop + Topaz AI**, preserving every crystalline detail at ultra-high resolution. Final aesthetic: a **fusion of futuristic high fashion, fine art surrealism, and editorial photography**, meticulously detailed to award-winning publication standard, evoking the atmosphere of **Neuromancer meets Alexander McQueen underwater couture fantasy**.

Model: https://www.instagram.com/loewemaedchen_mme/



Variance 2 & 3:



seedream-4-high-res: A futuristic high-end editorial fashion photo of a striking woman with voluminous fiery red afro hair, glowing under neon cyberpunk lights. She is wearing a bold red lace lingerie set, holding a soft brown teddy bear in her arms, creating a surreal contrast between innocence and provocative glamour. The setting is a vibrant neon-lit cyber club with glowing magenta and cobalt blue light strips running across the background, reflections bouncing off metallic walls, and holographic panels flickering with digital codes. The atmosphere is both playful and cinematic, combining retro-futurism with high-fashion aesthetics. Her porcelain skin glows under the mix of cool blue backlighting and warm magenta rim light, emphasizing her curves and the intricate lace texture of her lingerie. The teddy bear looks hyper-detailed with soft fur texture, almost surreal in the neon environment, symbolizing vulnerability and childhood juxtaposed with adult sensuality. Camera settings: Sony A7R V with 50mm f/1.2 GM lens, aperture f/1.8 for shallow depth of field, ISO 400, shutter speed 1/200 sec. Lighting setup includes a strong neon pink key light from the left, cobalt blue fill from the right, and a subtle backlight halo to accentuate her red hair and create depth. Post-production enhances the cinematic look with high-contrast color grading, glowing neon reflections, subtle film grain, and hyper-sharp details in the lingerie fabric and teddy bear fur. Mood: Cyberpunk meets pop-surrealism – a fashion dreamscape blending innocence, rebellion, and digital-era aesthetics.



seedream-4-high-res: A surreal fantasy editorial artwork of a mysterious woman standing on a stormy beach at sunset, golden sky filled with dramatic thunderclouds and crashing ocean waves. She is shown from behind, wearing a long flowing black gown embroidered with intricate patterns, her brown wavy hair cascading down her back. Two large, curved ram horns crown her head, symbolizing strength and myth. From her waist dangle three old metallic keys, glowing faintly, as if unlocking hidden worlds. The transparent folds of her gown open into another dimension: inside the fabric appears a luminous enchanted forest path, golden sunlight breaking through the trees, where a child in a red cloak walks deeper into the woods, creating a portal effect between reality and dream. Camera settings: Canon EOS R5 with RF 35mm f/1.4 lens, aperture f/5.6 for balanced depth of field, ISO 200, shutter speed 1/160 sec, natural light mixed with cinematic color grading. The tones are warm golds and deep blacks with high dynamic contrast, soft vignetting, and surreal blending of textures. Mood: Mythical, dreamlike, symbolic – a visual metaphor for hidden worlds and inner journeys, where storm, sea, and forest merge into one narrative.



seedream-4-high-res: A high-end surreal editorial portrait of a striking woman with fiery red curly hair, styled voluminously, crowned with an elaborate floral headdress made of oversized orange dahlias, daisies, and delicate feathers in orange, blue, and white. She wears a flowing gown embroidered with intricate floral patterns in soft pastel tones, adorned with a white feathered mantle that cascades over her shoulders. She stands in a dreamy, ethereal garden filled with giant blooming flowers in shades of peach, coral, and electric blue, bathed in glowing, soft light that creates a painterly, fairytale atmosphere. The background is a gradient of aqua and turquoise, slightly misty, enhancing the dreamlike, fantastical mood. Camera settings: Hasselblad H6D with 100mm f/2.2 lens, aperture f/4 for soft depth of field, ISO 100, shutter speed 1/200 sec, natural diffused lighting with additional softbox fill to highlight textures of the flowers and feathers. Post-processing emphasizes vibrant color contrast between fiery reds, soft peach, and luminous blues, with a painterly fine-art finish and subtle grain for depth. Mood: ethereal, fairytale, surreal elegance – a vision of nature as living couture, blending fantasy and high fashion in one frame.



Nano Banana Version:



Midjourney: full body photography of an ethereal woman with yellow hair made out from roots and vines, her skin is greenish blue, surrealistic painting by joel robison and giger, glowing light around the subject, dark background, full color photo, extremely detailed --ar 83:125 --raw --sref 1385003511 --profile czz2uvu 59xiqd5 xfudyez rpmcfcb min6aae



Midjourney via seedream-4-2k: the brain of the machines. Hyperdetails. --ar 3:4 --raw --sref 3349256275 1385003511 --profile czz2uvu 59xiqd5 xfudyez rpmcfcb yr3k957



Midjourney via seedream-4-2k: the brain of the machines. Hyperdetails. --ar 3:4 --raw --sref 3349256275 1385003511 --profile czz2uvu 59xiqd5 xfudyez rpmcfcb yr3k957



Midjourney via seedream-4-2k: the brain of the machines. Hyperdetails. --ar 3:4 --raw --sref 3349256275 1385003511 --profile czz2uvu 59xiqd5 xfudyez rpmcfcb yr3k957



Midjourney via seedream-4-2k: Lowlight. editorial fashion portrait. avant-garde. Dynamic pose. Extravagant look. Black Woman with a big yellow snake on her shoulders. Head of the snake next to the woman's head --ar 5:6 --raw --sref 3349256275 1385003511 --profile czz2uvu 59xiqd5 xfudyez rpmcfcb yr3k957



Midjourney via seedream-4-2k: demogorgon from stranger things tv series as a zombie in Tim Burton style --ar 5:6 --raw --sref 3349256275 1385003511 --profile 59xiqd5 xfudyez yr3k957 rpmcfcb czz2uvu



Midjourney via seedream-4-2k: a huge monster tomato with mouth. Very angry. Sharp teeth. Hunting people. In new york. Epic. --ar 3:4 --raw --sref 3349256275 1385003511 --profile czz2uvu 59xiqd5 xfudyez rpmcfcb yr3k957



Midjourney via seedream-4-2k: stranger things monster nightmare finale --ar 5:6 --raw --sref 3349256275 1385003511 --profile 59xiqd5 xfudyez yr3k957 rpmcfc czz2uvu



Midjourney via seedream-4-2k: Black and white photography of the text "Let's hope," mixed with pink graffiti, wild flowers, broken mirrors, typography on a black background, minimalism, fashion magazine cover style, woman's portrait, glitch art, collage in the style of R Needleman and D K Lum, distant background, light color palette, high contrast, halftone pattern overlay, vintage texture. --chaos 5 --ar 2:3 --raw --sref 1385003511 3349256275 --profile 59xiqd5 xfudyez yr3k957 rpmcfcb czz2uvu



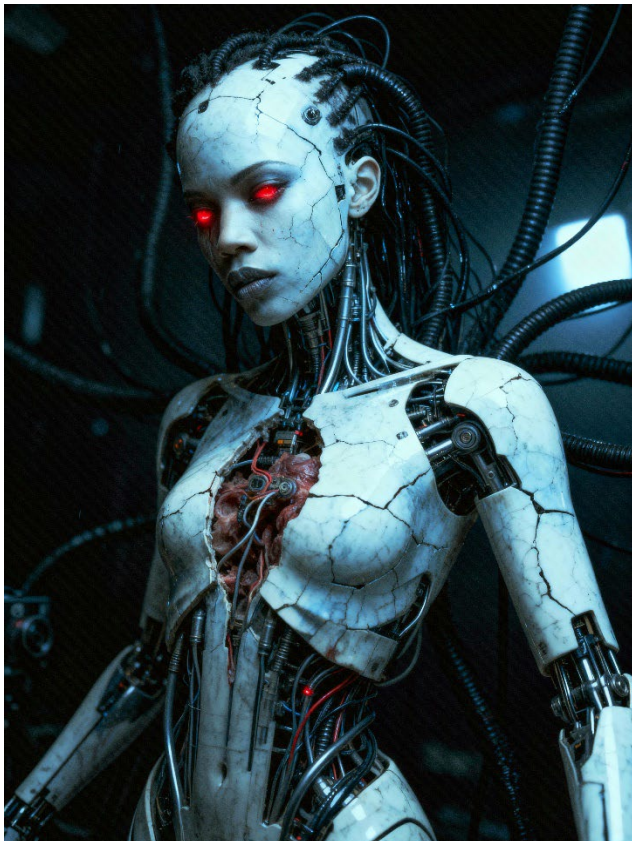
Midjourney via seedream-4-2k: Mona Lisa graffiti, spray paint, urban art style, colorful graffiti text "Casual", splattered ink and drips, grunge texture, high contrast, dark shadows, on a rough concrete wall background, in the style of James Jean, in the style of 비비하나 (Hibihana), high resolution, hyper-realistic, ultra-detailed. --ar 61:89 --raw --sref 3349256275 1385003511 --profile 59xiqd5 xfudyez yr3k957 rpmcfcb czz2uvu



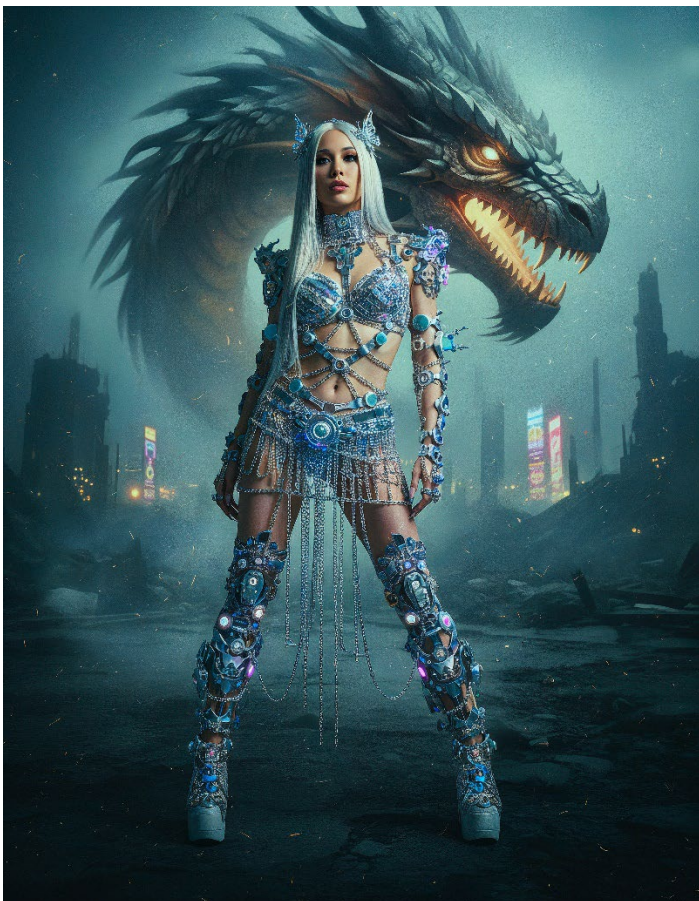
Midjourney via seedream-4-2k: Mona Lisa graffiti in the style of Alec Monopoly, dripping paint splatters, colorful palette --ar 61:89 --raw --sref 1385003511 3349256275 --profile 59xiqd5 xfudyez yr3k957 rpmcfcb czz2uvu



seedream-4-2k: A surreal dark sci-fi portrait of a biomechanical humanoid figure suspended in a void of shadow and cold light. The figure appears part human, part machine, her pale, almost porcelain-like skin fractured and torn, revealing layers of wires, tubing, and metallic sinews beneath. Her chest is partially open, exposing a mixture of organic tissue and mechanical implants, a disturbing fusion of flesh and machine. Black cables snake outward from her body in every direction, stretching into darkness, like a web of veins that bind her to an unseen machine hive. The cables shimmer with moisture and subtle reflections, suggesting both biomechanical fluid and metallic gloss. Her face is tilted upward, illuminated by a single stark beam of light from above, eyes glowing faintly red as if powered by an internal energy source. Her lips are slightly parted in a silent scream or perhaps a trance of transformation. Her hair, tangled with cables, merges seamlessly into the biomechanical system, blurring the line between identity and machinery. The atmosphere is haunting, futuristic, and nightmarish, evoking themes of post-human evolution, cybernetic horror, and the loss of individuality. The setting is undefined, a void-like environment with deep shadows and occasional glimmers of metallic surfaces catching the light. The ground fades into darkness, creating the illusion that she is levitating. The textures are hyper-detailed: cracked skin resembling aged porcelain, wet gloss on cables, corroded metal, torn fabrics clinging to her frame. Lighting is dramatic and cinematic, with harsh contrasts between the pale luminescence of her body and the surrounding abyss. Subtle volumetric fog enhances the depth, while the cables create a chaotic geometry of intersecting lines, framing her figure like a cage. Camera details (simulated): captured with a Leica SL2, 50mm f/1.4 lens, ISO 200, cinematic overhead spotlight softened through fog, aperture f/2.0 for shallow depth of field. The focus is razor-sharp on the subject's face and chest, while the background cables dissolve into blur. Post-processing includes added grain, film scratches, faint chromatic aberrations, and subtle noise for a retro-futuristic, analog feel. The color palette is dominated by cold metallic grays, desaturated blues, and stark white skin tones, with glowing red accents in the eyes and wires. Mood: dystopian, surreal, unsettling yet mesmerizing, an iconic vision of humanity entrapped and redefined by technology.



NANO Banana: A cinematic high-fashion fantasy scene set in a post-apocalyptic cityscape, illuminated by neon haze and burning embers. At the center, a powerful female warrior stands tall and defiant, framed against the ruins of skyscrapers and glowing holographic billboards fading in the distance. Her appearance fuses futuristic armor design with avant-garde couture: crystal-encrusted metallic pieces shimmer across her body, forming a structured bra and intricate shoulder guards, adorned with luminous blue gemstones and radiant circuitry. Chains and delicate metal tassels drape from her waist, swaying with a sense of movement, catching stray sparks in the smoky atmosphere. Her legs are encased in elaborate mech-inspired armor pieces, crafted from gleaming chrome, studded with glowing elements in shades of blue, violet, and silver. The boots rise high, platformed and surreal, blending cybernetic detail with runway extravagance. Her arms are ornamented with matching jewel-studded gauntlets, each piece meticulously rendered with photorealistic reflections. The warrior's hair flows long and silvery-white, cascading like liquid moonlight, contrasted by her flawless skin and commanding expression. Her face is framed with delicate headgear resembling crystalline ears or wings, giving her an ethereal, goddess-like aura. Around her neck rests an ornate choker, glowing faintly with embedded runes, tying her appearance to both myth and machine. Behind her looms a colossal dragon, its scales shimmering with iridescent bronze and black tones, its eyes burning gold, its jaws open in a roar that reveals glowing fire deep within its throat. The dragon's presence dominates the skyline, blending seamlessly with the smoke and neon mist, its wings partially folded yet immense, stretching across the horizon. The composition radiates tension: beauty and menace, human and myth, couture and chaos. The scene is lit dramatically with cool blue highlights and fiery orange accents, sparks floating in the smoky air, creating cinematic depth. The atmosphere merges futuristic sci-fi with fantasy epic, a vision that feels both fashion editorial and mythological painting. Photorealistic ultra-detail, Hasselblad medium format look, shallow depth of field on the warrior with background softly blurred into atmospheric glow.



Seedream 4: A surreal composition where the transformation between human and tree becomes a haunting yet graceful metamorphosis. The scene unfolds in a mist-drenched forest, illuminated by pale moonlight filtering through veils of smoke. At the center stands a figure whose upper body remains distinctly feminine — soft skin shimmering in ghostly highlights, shoulders and torso bearing the delicate proportions of a woman. Yet from the waist downward, her form dissolves into bark, roots, and fibrous textures, as though the ground itself is claiming her as its own. Her arms rise in a fluid, expressive pose, evoking the movement of a dancer caught mid-performance. One hand arcs upward, fingers extended like reaching branches, while the other bends across the body in a dramatic gesture of concealment and revelation. The pose is inspired by the expressive elegance of @img1, but reimagined through a surreal lens: neither fashion nor portrait, but an image of ritual transformation, where movement itself is part of the merging process. Her hair spills in wild strands, twisting into vine-like extensions that coil around the smoky air. The bark climbing her body begins to echo this rhythm, creating visual parallels between hair, wood, and mist. From her arms sprout fine branch-like protrusions, but they maintain a sense of motion, like extensions of a dance rather than static growth. The impression is not of a body trapped, but of a body in transition, surrendering to an otherworldly choreography. The background is alive with atmosphere: ancient trees lean in with scarred, claw-like branches, while pale fog swirls in turquoise and silver hues. The moon looms as a cold eye, bathing the figure in cinematic light that sharpens every detail of bark texture and skin tone. Smoke and glowing spores drift around her, creating a halo that amplifies the dreamlike quality of the moment. Camera & Rendering: Leica S3 medium format, 45mm f/2.8, cinematic low-key lighting with moonbeams cutting through smoke. Ultra-detailed textures with film grain, scratches, and analog imperfections to create the look of a surreal darkroom print. Mood: hypnotic, ritualistic, and uncanny. A surreal tableau where feminine beauty fuses with arboreal permanence, and the figure's dance-like pose becomes the language of metamorphosis — fragile yet eternal, human yet already something far beyond.

Model: https://www.instagram.com/loewemaedchen_mme/

Ursprungsbild: <https://www.deviantart.com/brownzworx/art/The-Old-Tree-43134737>



Seedream 4: A surreal cinematic high-fashion editorial photo of a woman in artistic lingerie styling, posing against a textured glowing background of warm orange and red tones blending into shadows. She stands in a dramatic pose, one hand adjusting her top, the other holding a large plush teddy bear that dangles toward the ground. Her long flowing hair falls slightly messy across her face, head tilted down, expression moody and introspective. She wears bold platform heels in turquoise, sheer stockings and delicate accessories that add contrast. The scene combines urban wall textures with a dreamlike meadow of glowing red flowers, surreal and painterly. Lighting is cinematic and dramatic, with golden highlights and deep shadows sculpting her figure, reflections of orange and teal creating painterly contrasts. Shot in Leica style, 50mm lens, shallow depth of field, fine film grain, vertical full-body framing. The mood is provocative yet artistic, blending childhood symbolism with modern fashion, surreal and editorial, like a cinematic dream.

Model input: https://www.instagram.com/karnika_sin_162/



Seedream 4: A cinematic dark fantasy art photograph of two women in an emotional, sculptural pose on a dimly lit stage-like floor. Their bodies are covered in full-body artistic tattoo designs with biomechanical and dragon motifs, glowing in intricate colors. One woman kneels on the ground, her body stretched, holding the other close in a dramatic embrace. The second woman stands above, leaning forward, her long hair falling over her face, and from her back extend large, black angel wings with detailed feathers. The atmosphere is surreal, painterly, and symbolic. Lighting is low and dramatic, casting warm highlights across their skin and tattoos, with deep shadows creating mystery. The background is textured with dark red and green tones, like an abstract wall fading into shadow. Composition is vertical, centered, shot in Leica cinematic style with a 50mm lens, shallow depth of field, fine film grain, and high contrast. The mood feels mythological, intense, and artistic, blending elements of fantasy, body art, and gothic elegance into one surreal editorial scene.

Model input: https://www.instagram.com/karnika_sin_162/



Seedream 4: A cinematic dark fantasy portrait of a graceful woman with metallic angel wings extending dramatically behind her, glowing with a surreal turquoise-blue light. She poses in profile, head tilted back, eyes closed, expression serene and powerful, as if embodying a celestial being. Her skin glows softly under the moody lighting, contrasted by long black gloves that add elegance and mystery. Around her neck lies a detailed jeweled necklace, sparkling with highlights, adding a sense of luxury and divine ornament. The wings are futuristic and sculptural, composed of luminous metallic feathers, sharp and radiant, spreading wide across the background. Ethereal light patterns ripple behind her, resembling energy waves or abstract celestial forms, painted across a dark atmospheric backdrop. The lighting is dramatic and cinematic: high contrast with glowing highlights along her shoulders and face, deep shadows sculpting her form. Composition is vertical, centered on her profile and wings, photographed in Leica editorial style with a 50mm lens, shallow depth of field, cinematic color grading, and fine film grain for artistic authenticity. The mood is mythological and futuristic at once, blending gothic elegance, fantasy surrealism, and high-fashion editorial energy.

Model input: https://www.instagram.com/karnika_sin_162/



Seedream 4: A cinematic dark fantasy fine art portrait of a mysterious @img1 with an elaborate horned headdress resembling twisted ram horns, blending seamlessly into a smoky, surreal background. She wears a dark corset-style gown, partly revealing her bare back, her posture elegant yet powerful as she turns her head toward the viewer with an intense, enigmatic gaze. A dark mask covers the area around her eyes, enhancing the sense of secrecy and mystique. From her back trail a set of ornate, antique keys on ribbons, symbolic and gothic, adding layers of hidden meaning to the scene. Her long wavy hair cascades over her shoulder, partially illuminated by soft dramatic light that sculpts her features. The entire artwork is presented in monochrome black and white, with deep shadows, luminous highlights, and painterly textures. The background swirls with abstract forms, resembling storm clouds or ghostly shapes, blending into her headdress and attire as if the environment and figure were merging. Lighting is low-key and cinematic, with sharp contrast and delicate tonal gradation, evoking the look of fine art photography combined with gothic surrealism. Shot in Leica-style rendering, with a 50mm lens, shallow depth of field, fine film grain and timeless analog atmosphere. The composition is vertical and centered, capturing the subject from the waist up, balancing elegance, mystery, and dark fantasy. The mood is symbolic, haunting, and evocative — a portrait that fuses gothic elegance, surreal dreamscape, and mythological undertones into a single piece of visual poetry.

Model input: https://www.instagram.com/karnika_sin_162/



Seedream 4: A gothic lady descends a grand curved staircase in a dark medieval castle, holding an antique candelabra with three glowing candles. The flickering light reveals her elegant black lace gown with deep crimson undertones, tightly fitted with a dramatic train flowing down the steps. A sheer black veil covers her hair, adding mystery and Victorian mourning beauty. The stained glass window above lets in a beam of pale moonlight, mixing with warm candlelight to create a cinematic gothic atmosphere, full of shadows and golden highlights. Dust floats in the light, the stone walls and wooden railing glow softly, and the scene feels like a high-fashion editorial fused with gothic romance, renaissance oil painting mood, and dark academia elegance. Photographed as if with Canon EOS R5, 85mm f/1.2, cinematic grading, shallow depth of field, rich textures, timelessly mysterious.

Model input: https://www.instagram.com/karnika_sin_162/



Seedream 4: A hyper-realistic and highly detailed digital artwork of a female from @img1 Surreal dark art, biomechanical fusion of two intertwined human-like forms, sculptural bodies merging with wires, tubes and metallic structures, photorealistic textures, atmospheric chiaroscuro lighting, cinematic perspective from above, abstract organic-mechanical anatomy, twisted elegance, haunting beauty, artistic editorial composition, fine grain, analog scratches, dystopian biomech aesthetic inspired by H.R. Giger, surreal dreamlike fusion of flesh and machine, evocative and unsettling mood, high-detail synthography digital art.

Model: https://www.instagram.com/loewemaedchen_mme/

